





Adam Hayes - North Finchley Office - Lettings 365 Ballards Lane, North Finchley, London, N12 8LL

Tel: 020 8445 4008 Email: info@adam-hayes.co.uk Web: www.adam-hayes.co.uk

Nether Street, London, N12 7NN

£1,700 PCM

 2 Bedrooms  1 Bathrooms  1 Receptions

Key Features


- Two Double Bedroom Flat
- Additional Study / Home Office
- Open Plan Kitchen / Lounge
- Doble Glazing
- Great Location

Other Information

Council Tax Band: D

Length of Tenancy: Long Let

Deposit: £1,960

Energy Efficiency Rating		
	Current	Potential
Very energy efficient - lower running costs		
(92 plus) A		
(81-91) B		
(69-80) C		
(55-68) D		
(39-54) E		
(21-38) F		
(1-20) G		
Not energy efficient - higher running costs		
England & Wales		EU Directive 2002/91/EC 

Nearest Stations

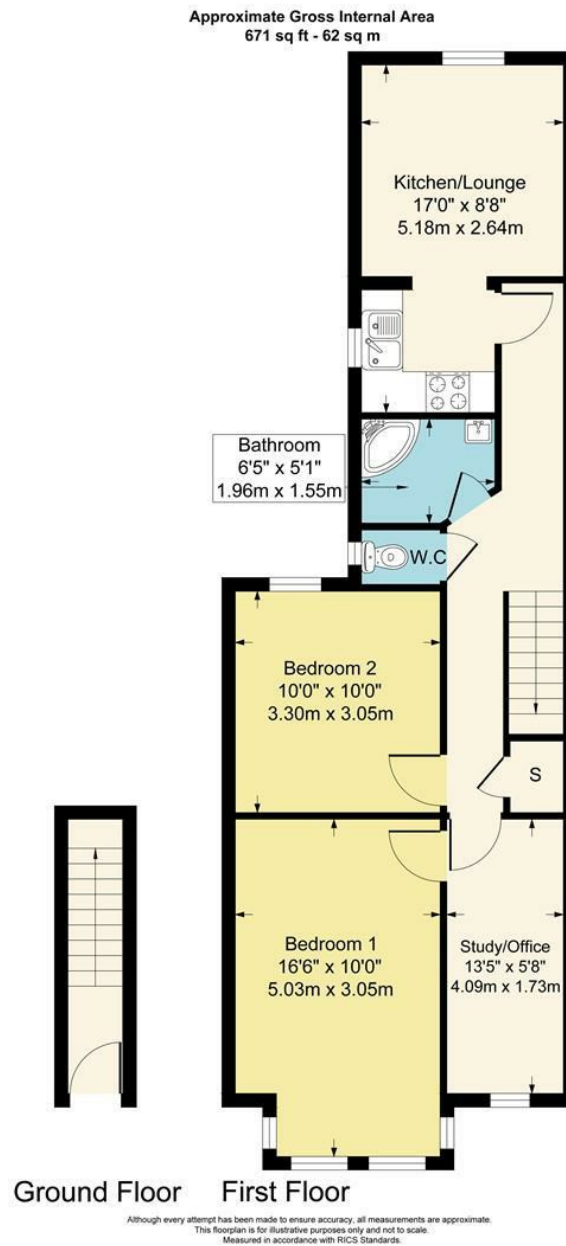
- West Finchley
- Woodside Park

Property Description

A two double bedroom first-floor conversion with an additional study, ideally situated in this excellent location. This property offers convenient access to a variety of shops, cafés, and restaurants along Ballards Lane, as well as excellent transport links via West Finchley Tube Station (Northern Line) and North Finchley Bus Station. The property boasts a generously sized principal bedroom (approx. 16ft), a modern fitted kitchen with an open-plan lounge/dining area, double glazing, and gas central heating. The additional study can also be used as a wardrobe room or home office providing extra versatility. Available immediately and offered mainly furnished. Early viewings are highly recommended!

Adam Hayes - North Finchley Office - Lettings 365 Ballards Lane, North Finchley, London, N12 8LL

Tel: 020 8445 4008 Email: info@adam-hayes.co.uk Web: www.adam-hayes.co.uk



These particulars, whilst believed to be accurate, are set out as a general outline only for guidance and do not constitute any part of an offer or contract. Intending purchasers or prospective tenants should not rely on them as statements or representation of fact, but must satisfy themselves by inspection or otherwise as to their accuracy. We have not carried out a detailed survey, not tested the services, appliances and specific fittings. Room sizes should not be relied upon for carpets and furnishings. The measurements given are approximate. No person in this firm's employment has the authority to make or give any representation or warranty in respect of the property.